

CASE STUDY

WDH FAVOURS INSULSLAB FOR FABRIC FIRST

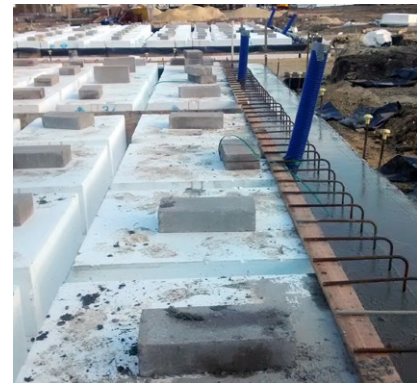
WDH has adopted Insulslab as the preferred foundation system to support its commitment to a 'Fabric First' approach to building energy efficient affordable homes. Used in conjunction with a timber frame SIP construction, WDH has consistently been able to achieve superior thermal performance, keep build costs to a minimum and remove the need for renewables on dwellings built to Level 4 of the Code for Sustainable Homes.

Having used Insulslab on an initial site which required piled foundations, WDH has subsequently specified the highly insulated foundation system for use on its new Ripley Court development. Offering a mixture of 39 semi-detached and detached houses, the Ripley Court site benefits from solid clay ground – demonstrating the flexibility of Insulslab to be used on a range of ground conditions.



WWW.INSULSLAB.COM





However, the main driver behind the adoption of Insulslab at WDH has been its insulation credentials and the very low U-values that can be achieved. Alan Poxon, Senior Project Officer at WDH, explains: "One of our key objectives is to deliver thermally efficient homes which help to reduce energy bills for our tenants.

As such, we are continuously reviewing our standard specifications to identify new techniques and materials which improve thermal performance without increasing build cost. When it comes to the foundation construction, Insulslab has proven to be the ideal solution."

At Ripley Court, WDH consulted the Insulslab technical team to help value engineer the Fabric First design. In doing so, an additional 100mm layer of insulation was integrated across the foundation footprint which ultimately enabled WDH to change a triple glazed specification to standard double glazed windows.

Alan continues: "By enhancing the foundation insulation we were able to realise cost savings elsewhere in the building envelope – but more importantly, improve the overall U-Value from 0.12 to 0.09."

From a time perspective, WDH has also benefitted from the move to Insulslab as a semi-detached slab can now be completed in just five days:

"Insulslab is a true all-rounder in terms of the advantages it gives us over traditional foundation techniques. In my experience, no other system can offer time and cost savings whilst also improving thermal performance to the same level," concludes Alan.

INSULSLAB

Tel: 0844 5766 726
Email: sales@insulslab.com

WWW.INSULSLAB.COM

